

PRODUCTS

LAMINATED SHEET



Haysite offers a range of products to meet your electrical insulation needs. Whether GPO - 1, 2, or 3, Haysite's Fiberglass Reinforced Plastic Sheets provide our customers with options when faced with critical material requirements.

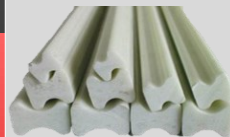


APPLICATIONS

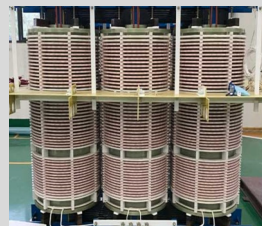
// ELECTRICAL INSULATION
// SWITCHGEAR
// DATA CENTERS
// HIGH TEMP. / CORROSION



PULTRUDED PROFILES



Pultrusions are constant profile parts formed by drawing continuous fiber reinforcements through a resin bath. The saturated reinforcements then enter a steel die which shapes the material into the desired profile.

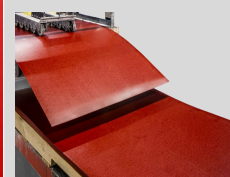


APPLICATIONS

// ELECTRICAL INSULATION
// TRANSIT FLOORING
// HIGH TEMP. / CORROSION
// STRUCTURAL / SPECIALTY



PULTRUDED SHEET



Haysite continues to invest in new technologies and equipment to expand our pultruded sheet capabilities. Our proprietary processes allow us to maintain tight tolerances and the highest quality in the industry.

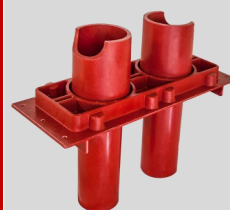


APPLICATIONS

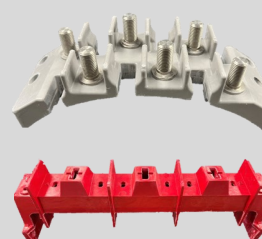
// ELECTRICAL INSULATION
// TRANSIT FLOORING
// HIGH TEMP. / CORROSION
// STRUCTURAL / SPECIALTY



CUSTOM MOLDED PARTS



Our ability to manufacture material and molded parts offers our customers a "one shop stop" approach and simplifies the design and manufacturing process. Haysite has over 70 years of in house custom molding experience.



APPLICATIONS

// ELECTRICAL INSULATION
// TRANSIT FLOORING
// HIGH TEMP. / CORROSION
// STRUCTURAL / SPECIALTY



COMPOUNDS



Haysite manufactures both SMC (Sheet Molding Compound) and BMC (Bulk Molding Compound). These materials are sold commercially to other injection, compression and transfer molders to use in various applications.



APPLICATIONS

// ELECTRICAL INSULATION
// TRANSIT FLOORING
// HIGH TEMP. / CORROSION
// STRUCTURAL / SPECIALTY



FOUNDED IN 1954, HAYSITE FORMULATES AND PROCESSES THERMOSET MATERIALS FOR HIGH TEMPERATURE INSULATION, CORROSION RESISTANCE AND LIGHTWEIGHT STRUCTURAL APPLICATIONS

- ELECTRICAL INSULATION
- THERMAL-PLATEN INSULATION
- CORROSION & WATER TREATMENT
- TRANSIT
- STRUCTURAL
- MEDICAL



PROUDLY MADE IN AMERICA



CONTACT US:

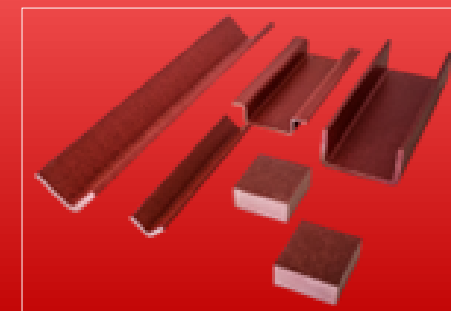
HAYSITE

5599 NEW PERRY HIGHWAY

ERIE, PA 16504

PH: 814-868-3691

info@haysite.com

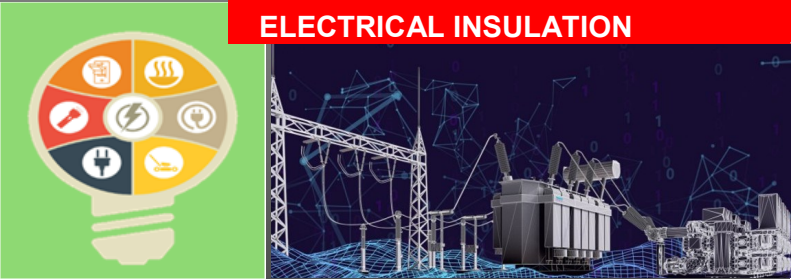


Your source for Strength,
Integrity, and Quality.

HAYSITE.COM

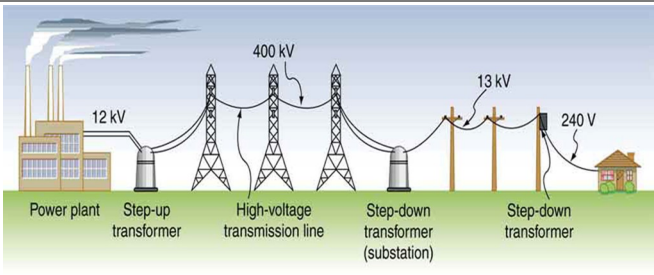
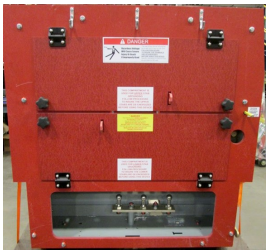
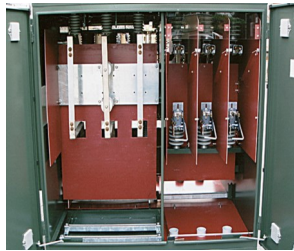
HAYSITE.COM

ELECTRICAL INSULATION

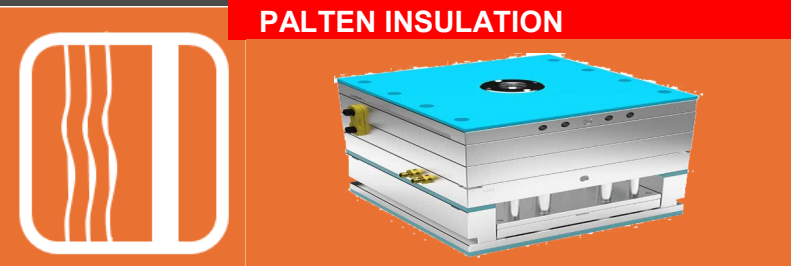


ELECTRICAL INSULATION PRODUCT OVERVIEW

Haysite’s laminated products are used as insulation material for transformers, switchgear and other insulation applications. Typical uses are in data center, electrical infrastructure, EV charging stations, and grid modernization .

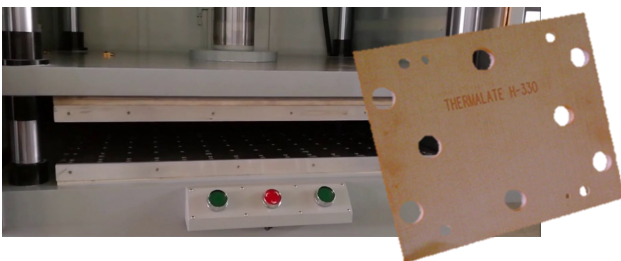
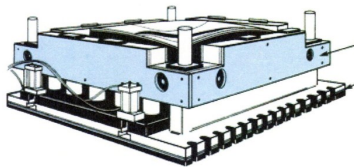


PALTEN INSULATION



PLATEN INSULATION PRODUCT OVERVIEW

Haysite’s family of mold and platen insulation products are specially engineered fiberglass reinforcement thermoset polyester composite which offer superior energy efficiency, temperature control and durability for high temperature mold and platen thermal applications.

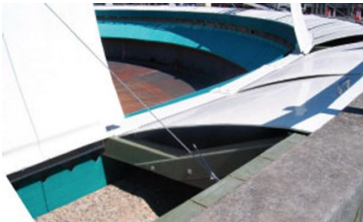


WATER & CORROSION



WATER TREATMENT AND CORROSION PRODUCT OVERVIEW

Haysite brings years of experience supplying corrosion resistant products for use in water treatment and laboratory fume hood markets. Haysite’s high quality, consistent sheets make excellent fume hood liners and our corrosion resistant materials offer very low moisture absorption.

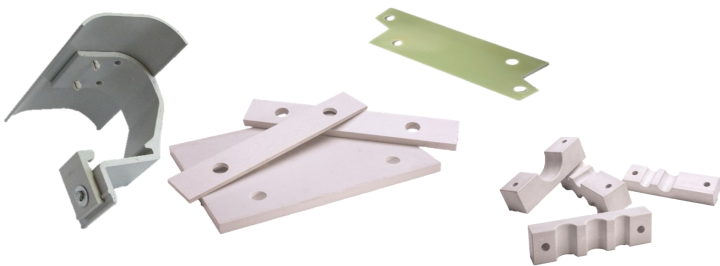


TRANSIT



TRANSIT PRODUCT OVERVIEW

Haysite composite products are an excellent fit for transit applications, from light rail vehicle car sub floor material to third rail protection, shims and wire supports. Haysite transit products are formulated to meet stringent specifications for smoke, flame and toxicity. Our products pass NYCTA spec 64 and 65.



STRUCTURAL



STRUCTURAL PRODUCT OVERVIEW

Haysite produces custom high strength sheet, as well as pultruded profiles for various structural applications. Our products include materials which exhibit substantial resistance to cold flow or creep under heat and pressure. Applications include stair treads, thermal insulation, flooring and other Industrial needs.

